

COMPAGNIE ARIADONE

TECHNICAL RIDER

DIRECTION TECHNIQUE

Eric LOUSTAU-CARRERE

Tél. : 33(0)6 07 08 93 70

Fax :33(6)6 07 04 72 34

E mail : eloustau@club-internet.fr

COMPAGNIE ARIADONE

64, rue Surson

33 300 Bordeaux

FRANCE

Tél. 00 33 (0)5 56 39 16 77

Mail : ariadone@wanadoo.fr

4/03/06 **ARIADONE**
" **ZARASOUSTRA VARIATION**"
Technical requirement

3 technicians, 7 dancers 1 tour manager

Scénography:

Stage with black dance floor, 1 pool down stage screw in the wood floor, a moving wall up stage with cyclo, 7 box for salt
Back black drop in 2 part middle stage.
1 mobile leg

The CIE Come with

- The "Monolith screw in the wood floor.
- 1 wall 5m high, 2m large, 40cm deep, 200kg on is rail track
- 7 saltbox fixed on pipes
- A plastic cyclo fire proof 5,5m high 3m large

Following this technical requirement

- Channels, spots, filters and dimmers list.
- Stage plan
- Section
- Light plot
- Floor plan

Provide by the theatre:

A) Stage:

- 1) Stage opening 10,5m. 16 m wall to wall.
- 2) Depth 12 m (minimum under ceiling 6,5m).
- 3) Provide 9 to 11 black dance carpets 1,5M large 11m long. 1 white dance carpet 4m long as minimum as a reflector for the light.
- 4) 1 Back drop black in 2 parts (5m larg each) + 1 black leg 4m large on curtain track or on pipe to be fly.
- 5) Legs and borders (Black velvet in good condition) enough to make a black box and mask the lights.
 - a. Minimum 10 legs 2,5 m wide x 7m high). We need theatre weights to weigh down the legs.
 - b. 6 Borders
- 6) 2 pipes for the cyclo 3,5m long .1 in aluminium for the top, 1 iron made for down part.
- 7) 20kg of dry ice by show and 1 dry ice machine.
- 8) 1 fog machine (not a smoke machine) MDG3000, MARTIN Stage Haser....
- 9) 200KG of salt. Standard fine salt .
- 10) The stage must be clean and available when the Company arrives.
- 11) The monolith is line forwood fixed on a metal plate screw in the wood floor between 2 dances carpet. Provide an electric screwdriver.
- 12) Provide materiel's to clean the dance floor:
- 13) 2Dressing room for 3dancers, 1 for one .Hot shower with enough hot water (30mn for each) and 7 towels.
- 14) 2 quick changes on each side of the stage (table, mirror, dimming light).
- 15) Provide mineral water for 11 people, some fruit juice, dried fruits, biscuits, café and tea.

The company have his own dry ice machine and his salt. So check with us what is the best in relation with the coast of transportation and Electricity voltage.

4/03/06 **ARIADONE**
" **ZARASOUSTRA VARIATION**"

B) STAFF:

- 1) **The Company technical staff is composed of 3 technicians (Lighting, Sound and stage)**
- 2) **The theatre will provide a schedule with the time for setting up / focusing / recording / rehearsal / stage cleaning / entry of the audience / time for the show / strike.**

SET UP

- 3) 3 stagehands for unloading the equipment (20m3). Forklift is helpful. The cases are big and heavy 200KG
- 4) Provide the staff as necessary to build the show. Everything has to be ready at 3 PM the day of the show for a run through
- 5) It will be difficult to build the show with less than minimum 4 Electricians, 4 stagehands, 1 sound, and 1 stage manager.
- 6) Provide 2 stagehand and 1 fly 2 hours before the show to load the salt. (1 hour).
- 7) Provide 1 hour before the show, staff to clean the stage and to check lights and sound. 30mn to clean the stage.
- 8) We need 1 hour to record the lighting cues.
- 9) Means to achieve the setting up (Staff and material) depends on the usual working condition and are under the responsibility of the Theatre.
- 10) Our technician does the desk sound and light board during the show.
- 11) Minimum 1 hour pause for the lunch

Note: The Company have a small dry ice machine. Contact us to check if we provide it or not.

Performance

- 12) 1 stage manager for the main curtain.
- 13) 1 light technician, 1 sound technician, 1 stage hand. 1 technician for the follow spot.

Strike

- 14) A minimum of 4 stage hands and 2 electricians exclusively for our strike, Immediately after the Show.

C) SOUND:

Loudspeakers.

- 1) 1 FOH system :D&B , MEYER , HEILL...Covering all the audience and providing 98dB at the mixing desk place.
 - 2) One Cluster left and right
 - 3) A second FOH system behind the back black drop :UPA MEYER
 - 4) Small system back of the room : 2/4 monitors are ok.
 - 5) 2 side fill on stage
- CONTROL equipment
- 6) 1 mixing desk: YAMAHA DM 2000,DM 1000,O2R96...
 - 7) 2 CD players with AUTO PAUSE and AUTOCUE
 - 8) 2 microphones (AKG 451,SM91, KM184, Neumann....)
 - 9) Provide 2 small dimmable lamps for the lighting of CD players, no desk lamps with gels.
 - 10) In case of analogue mixing desk provide this must be 16/8/2 (6 aux post fader) and provide 2 SPX900 or 990, 4 delay line and 4 equalisers 31 bands.

INTERCOM

-6/7 Intercoms (cable system: Type CLEARCOM-OVERLINE...). 1 sound-desk, 1 light desk, 1 on stage for the front curtain, 2 up stage right and left, 1 at the follow spot .In case of fly one more.

NO walky talkies.

The material must be in perfect condition, and must not create any noise. (Buzz...).

4/03/06 **ARIADONE**
" **ZARASOUSTRA VARIATION**"

E) LIGHT:

The company provide:

- 10 PAR 56 on 2 channels
- 2 fluorescent lamp 1 channel
- The ramp 2 colours 2 channels
- Provide adaptors for French plug

- NOTE: In case of long flight it can be easier that the theatre provide this equipment.

1) **Lanterns: all equipped with filter holders, hooks and lamps in good condition**

- 1 follow spot 1200W HMI with mechanical dimmer, Iris and a ball bearing tree.
- 29 Profiles 1 KW (10 X 43° JULIAT, NIETHAMER.) (13 with gobo holder).
- 19 Spots 1KW PC or PEBBLE lenses.
- 13 Spots 2KW PC or PEBBLE lenses
- 16 PAR 64 (8CP 60-8CP61-4CP62)
- 2 Fresnel 5KW
- 8 Asymmetrical cyclo light
- 14 PAR 36 F1 on floor stand.
- 1 tree for a par 64 1m high

2) Provide a moving ladder for focussing, or GENIELIFT.

3) Around 66 dimmers of 3kw and 3of 5KW

4) Colours, dimmers, channels...see join list. LEE FILTER and ROSCO 114-119-130

Light board and dimmers.

5) 1 LIGHT DESK with memories and electronical patch. The light desk must have a direct access to the fade speed. ETC and many STRAND light board can't do it!

6) The light desk must be in front of the stage; all parts of stage must be perfectly visible (sides and top). The control room window must be clear, not tinted glass. The best is to be in the room until the rehearsal finishes.

7) Provide 2 small dimmable lamps for the lighting of the desk and machines, no desk lamps with gels.

8) In case of analogic dimmers, the minimum levels must be perfectly checked before the arrival of the company.

9) We are able to provide the printing cue list for the light to be recorded in advance.

Technical manager/ light designer	Sound	Stage
Eric LOUSTAU-CARRERE	Diégo CROATTO	Laurent RIEUF
Tél. : 00 33 6 07 08 93 70 Fax : 00 33 6 07 04 72 34	Tél. :00 33 6 08 41 78 62	Tél. : 00 33 6 14 47 34 48
E mail : eloustau@club-internet.fr	E mail : diego.croatto@neuf.fr	E mail : Laurent.rieuf@wanadoo.fr

N° circuit /channel	QUANTITE			GEL.	DIFF.		2KW	3KW	5KW	REPLACEMENT
	50	TYPE								
1	Cyclo haut	3	CYCLIODE	1 Kw	198		2	1		
2	Cyclo haut	3	CYCLIODE	1 KW	200		2	1		
3	Libre									
4	Cyclo bas	2	CYCLIODE	1 KW	O27		2	1		
5	Cyclo bas	3	CYCLIODE	1 KW	200		2	2		
7	Face	3	PC	1 KW	203		1	2		
8	Face	4	PC	2 KW	107		1	1		
9	CUIVRE	2	PAR	CP62 KW	201		1	1		
10	CUIVRE	2	PAR	CP62 KW	204+207		1	1		
11	DOUCHE CUIVRE	1	PC	1 KW	204	119	1	1		
12	LIGNES	12	PAR36			MATERIEL CIE	1	1		
13	DOUCHE CUIVRE	1	PC	1 KW	201	R 119	1	1		
	Libre									
16	RAMPE lampe FFR NITRAPHOT			4 KW		R100	MATERIEL CIE	1	1	
17	rampe PAR 38 mazda PAR			2 KW	204+207	R100	MATERIEL CIE	1	1	
18	Rasant monolite carl	1	DEC 36°	1 KW	201		1	1		
	Libre									
20	EXT PARAPLUIE	2	DEC 30°	1 KW	201 /204	R119	1	1		
21	INT PARAPLUIE	2	DEC 40°	1 KW	201 /204	R119	1	1		
22	CONTRE CENTRE	1	FRESNEL	2 KW	204	R 114	1	1		
23	CONTRE CENTRE	2	FRESNEL	2 KW	204	R 114	1	1		
24	FACE PARPLUIE	1	PC	1 KW	204	R 114	1	1		
25	FLUO SOL	2		KW			1	1		
	Libre									
27	DOUCHE CASINOMORI	1	PC	2 KW	117	R 119	1	1		
28	DOUCHE CASINOMORI	1	PAR	CP61 KW	117		1	1		
29	SOL TUBARIQUE			KW		MATERIEL CIE	1	1		
30	DIAG FACE MONOLITE	1	DEC 36°	1 KW	201	R 119	1	1		

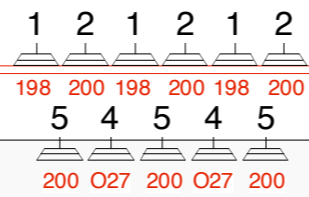
**En général les Projecteurs plan convexe sont équipé de diffuseur Rosco 119 ou 114.
Dans le cas de lentilles pebble ou fresnel ces diffuseurs peuvent être enlevés**

N° circuit /channel	QUANTITE			GEL.	DIFF.				REPLACEMENT
		TYPE		LEE	ROSCO				
31	CONTRE FINAL SORCIER	2 PAR	CP61	107			1	1	
	Libre								
34	FACE SORCIERE	6 PAR 46			R 114		1	1	
35	AMBIANCE BLEU	9 PC	2 KW	198			4	3	
36	SEL	2 PAR	CP60	203	R 114		1	1	
37	SEL	1 PAR	CP60	203	R 114		1	1	
38	SEL	1 PAR	CP60	203	R 114		1	1	
39	CASINOMORI	6 PC	1 KW		R 114		3	2	
40	Libre								
41	Cte sorcières	1 FRESNEL	5 KW	201					1
42	DOUCHE HANGING	2 PC	1 KW	203	R 114		1	1	
43	FACE GOBO	4 DEC 25°	1 KW	201			2	2	
44	GOBO	6 DEC 40°	1 KW	201		PORTE GOBO	3	2	
45	GOBO FACE	3 DEC 40°	1 KW	201		PORTE GOBO	2	1	
46	CONTRE SOL SERPENT	1 PAR	CP61	201		Sur pied	1	1	
47	DOUCHE SIL MARIA	1 PAR	CP60	203	R 119		1	1	
	Libre								
50	DOUCHE SERPEN T	1 PC	1 KW	201	R 119		1	1	
51	FACE CASINOMORI	4 PAR 46				MATERIEL CIE	1	1	
52	SEL FOND	1 PAR	CP60	203	R 114		1	1	
53	CONTRE GENERAL	1 FRESNEL	5 KW	201					1
54	Libre								
55	RASANT FOND JARD	2 DEC 40°	1 KW	201			1	1	
56	RASANT FACE JARD	2 DEC 40°	1 KW	201			1	1	
57	RASANT FACE	2 DEC 40°	1 KW	201			1	1	
58	RASANT FOND COUR	2 DEC 40°	1 KW	201			1	1	
59	RASANT FACE COUR	2 DEC 40°	1 KW	201			1	1	
60	SEL	1 PAR	CP60	203	R 114		1	1	
61	SEL	1 PAR	CP60	203	R 114		1	1	

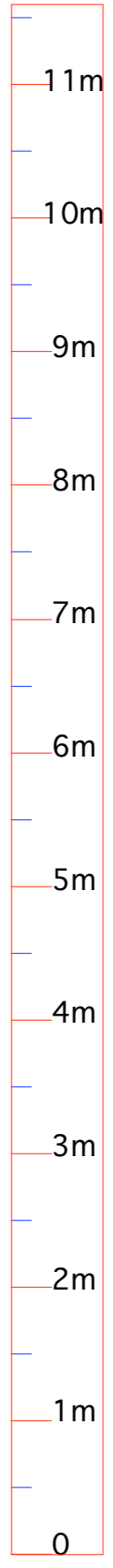
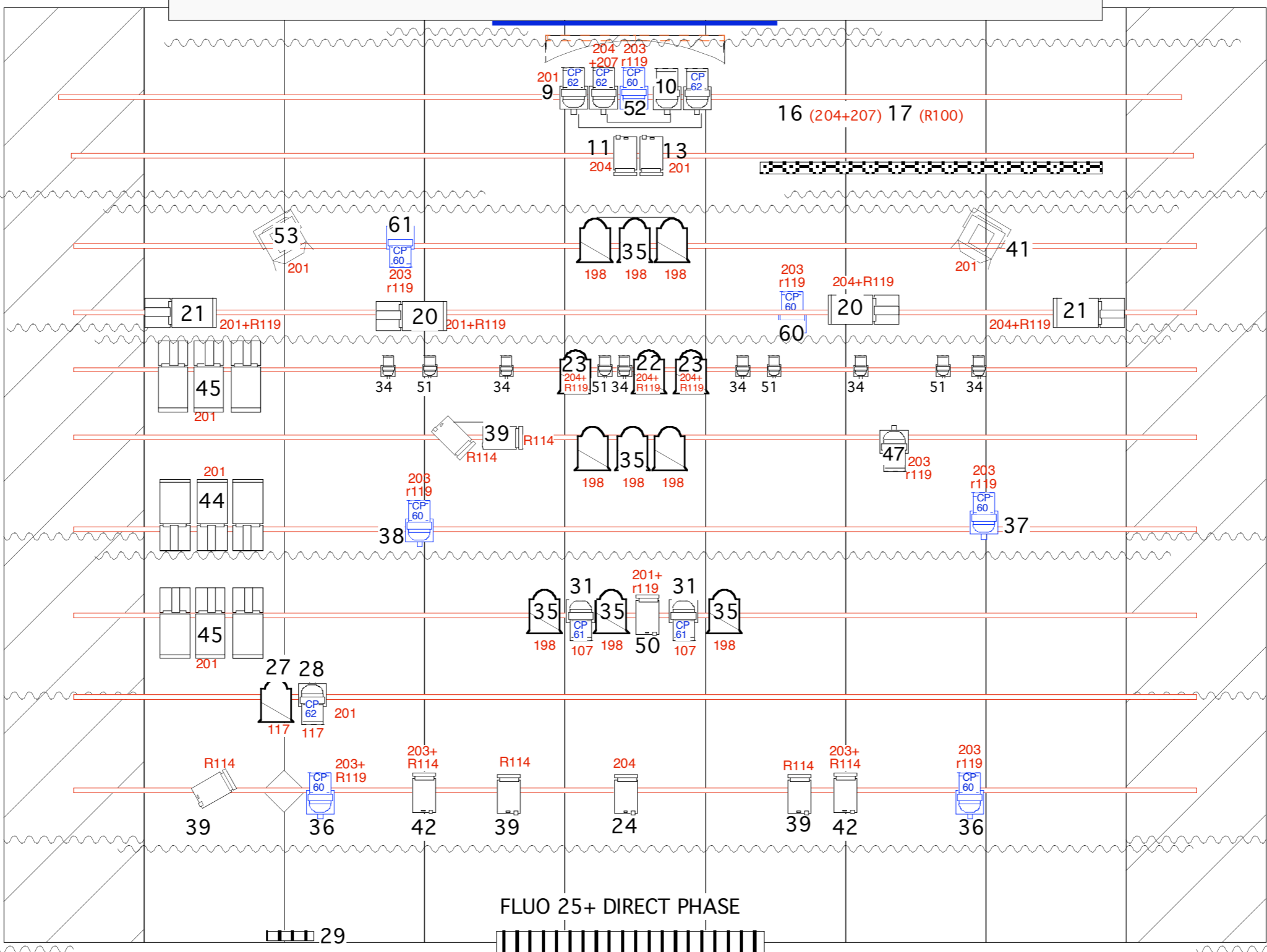
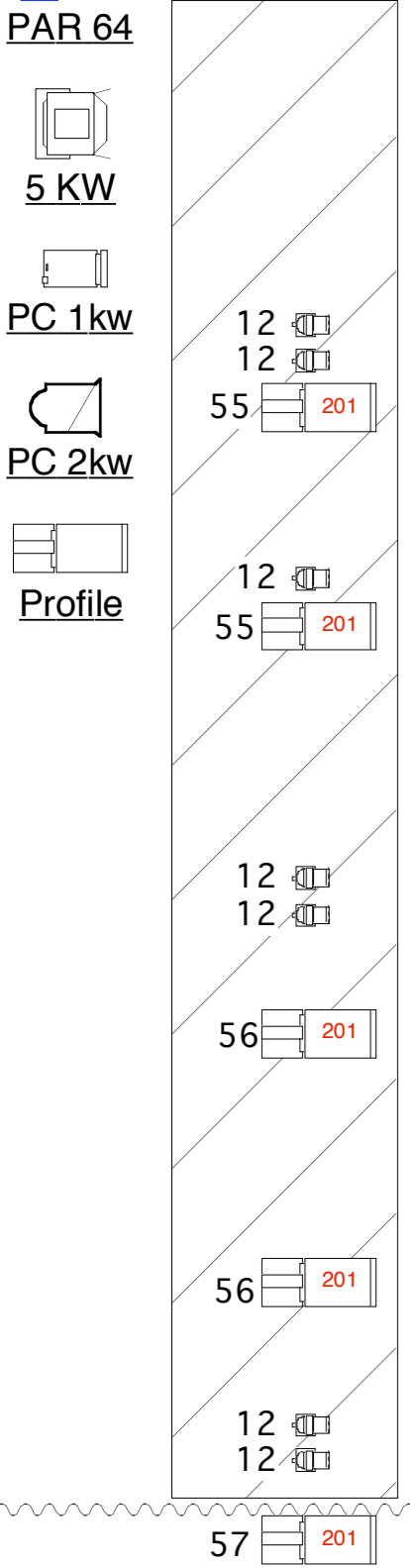
En général les Projecteurs plan convexe sont équipé de diffuseur Rosco 119 ou 114.

Dans le cas de lentilles pebble ou fresnel ces diffuseurs peuvent être enlevés

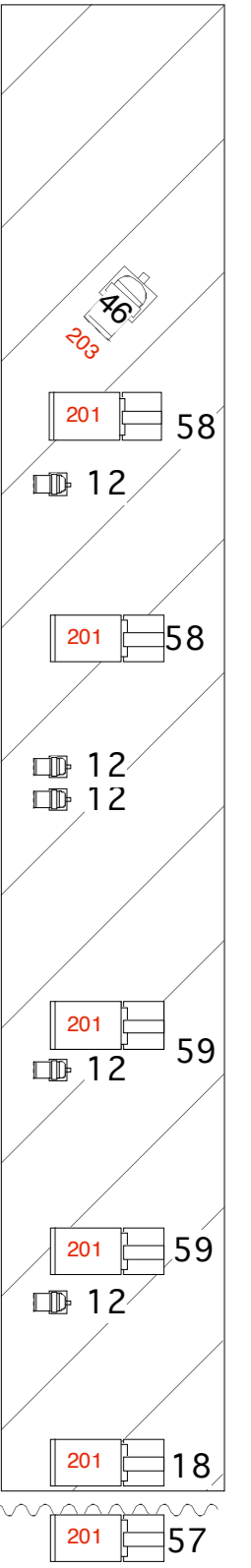
Spectacle: ZAROUSTRA variations
Cie : ARIADONE



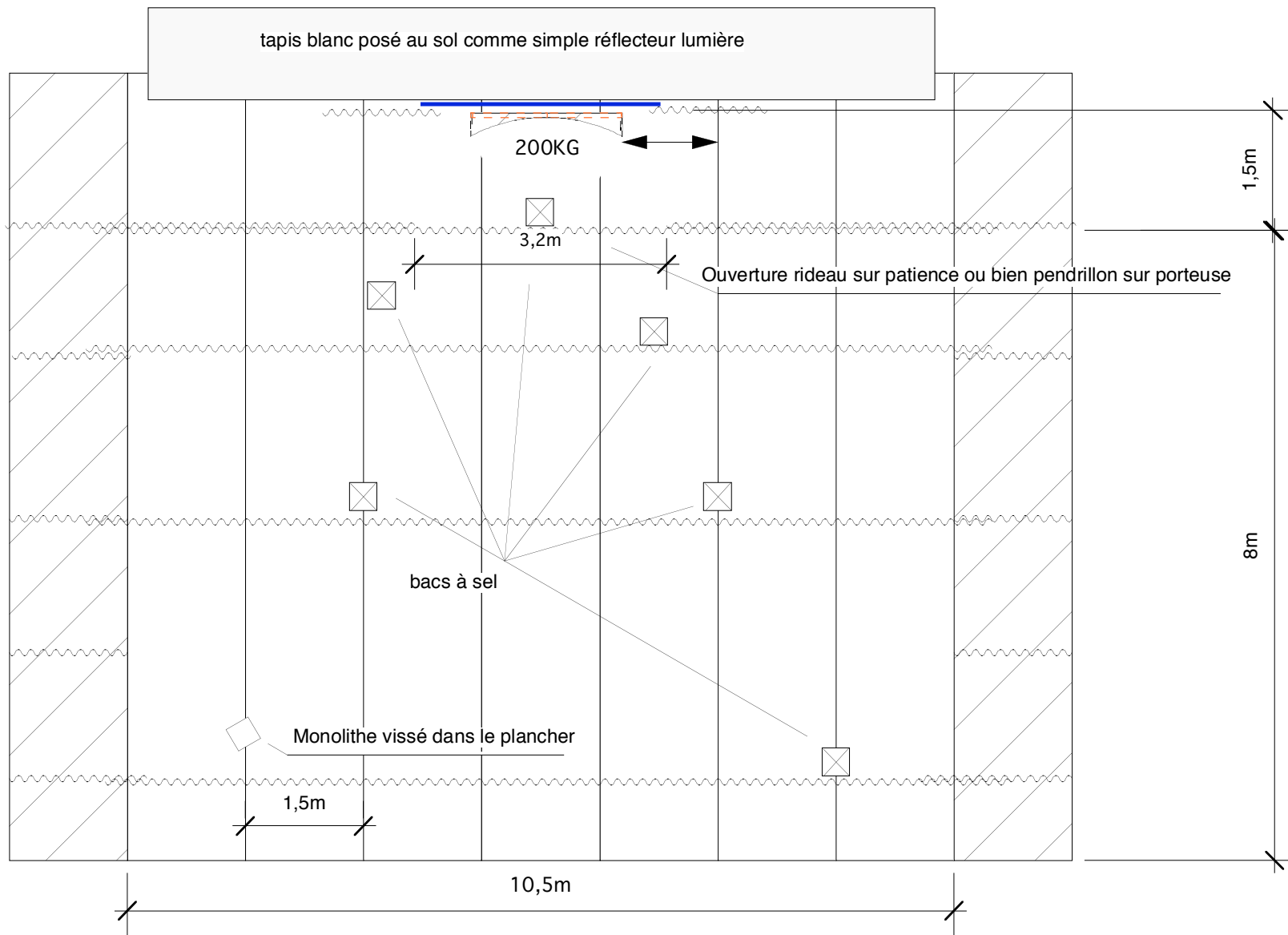
ECL SOL



ECL SOL

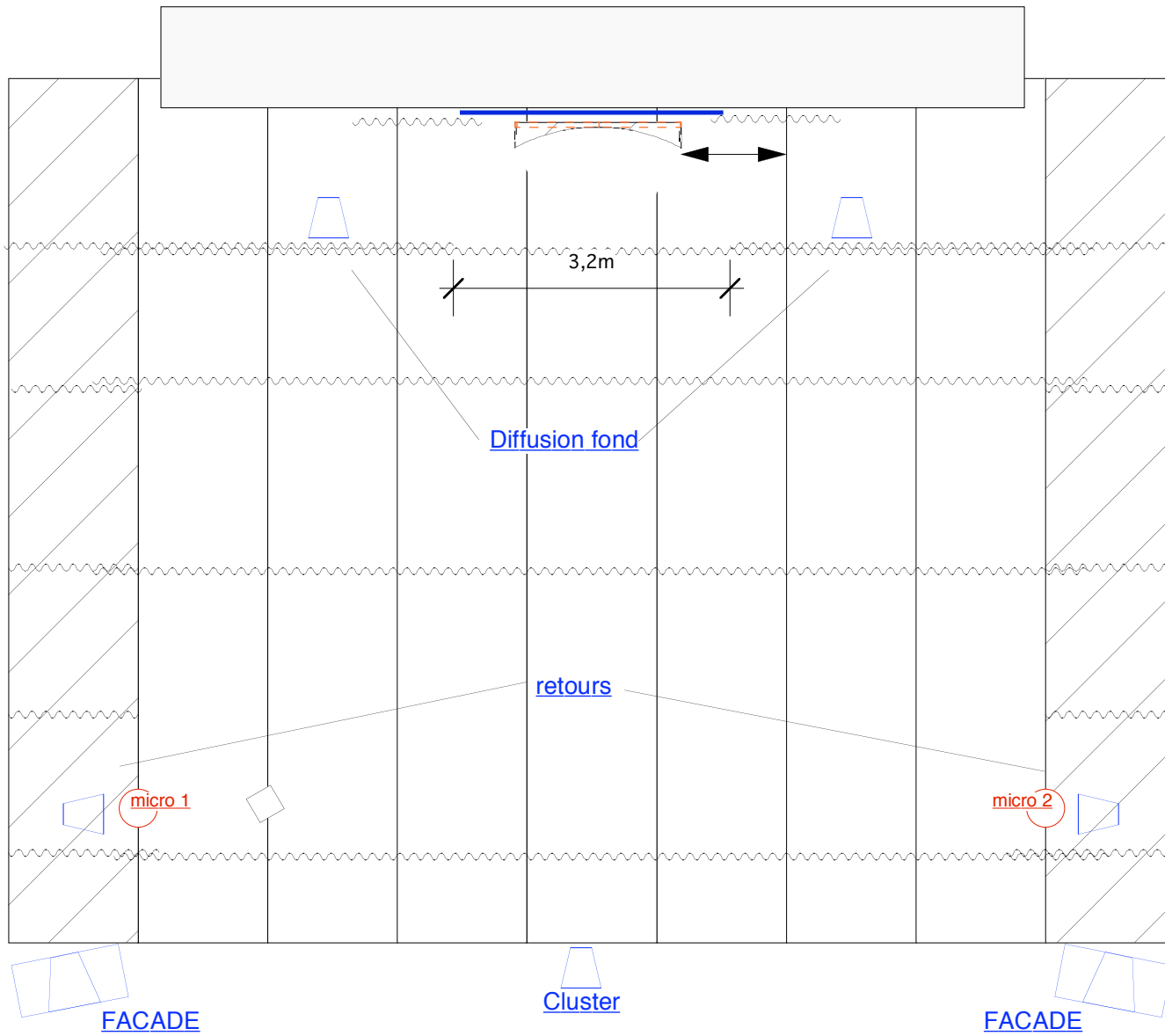


PLAN ECLAIRAGE



Plan de scène

Spectacle: ZAROUSTRA variations
Cie : ARIADONE



DIFFUSION SALLE

plan sonorisation

Spectacle: ZAROUSTRA variations

Cie : ARIADONE

Line SET ZARASOUSTHRA		
P28	White reflexion screen	
12,0 mL P27	CYCLO Light	Hight 7,5m Mobile pipe
10,4 mL P26	Cyclo Cie	
10,3 mL P25	LEGS	Hight 7,5m
10M P24	SET on rail track	Hight 7M
9,8 mL P23	Border	Down part at 6,8M
9,2 mL P22	Light	
8,6 mL P21	Light	
8,4 mL P20	SALT 1 box	20kg
8,3 mL P19		
8,1 mL P18	Legs	3,5M large
8,0 mL P17	Back black drop	Oppening 3M
7,8 mL P16	Border	Down part at 5m
7,3 mL P15	Light	5kg
6,8 mL P14	Light	5kg
6,6 mL P13	SALT 2 box	50kg
6,5 mL P12	Legs	Oppening 10,5M
6,3 mL P11	Border	Down part at 5m
6,0 mL P10	Light	
5,5 mL P9	Light	
4,5 mL P8	Light	
4,3 mL P7	SALT 2 box	50kg
4,2 mL P6	Legs	Oppening 10,5M
4,1 mL P5	Border	Down part at 5m
3,5 mL P4	Light	
2,6 mL P3	Legs	Oppening 10,5M
2,4 mL P2	Light	
1,7 mL P1	Light	
1,5 mL P0	SALT 2 box	50kg
1,3 mL P1	Legs	Oppening 10,5M
1,0 mL P2	Border	Down part at 5m
0,0 mL P1	Front Cotton	
	Light L2	-1M à -3M
	Light L1	Room with angle 45°/60°